

64°

Temperature

62°

LENNOX
Innovation never felt so good.®

welcome comfort



ELITE® SERIES



XP14

High-efficiency
heat pump

The ideal solution inside and out.

The Elite® Series XP14 heat pump brings reliable comfort to your home environment, and then does even more, putting energy efficiency to work to help lower your utility bills. Featuring a precision-engineered scroll compressor, the XP14 performs quietly and efficiently on the hottest summer days, and provides ideal warmth when the weather turns colder. So every minute you spend inside with your family feels just right.

You'll welcome the savings that come with the XP14's energy-efficient design. And you'll appreciate the smooth, quiet operation made possible by its precision-balanced direct-drive fan and special compressor sound-dampening system.



Reliability you can count on, when it counts the most

The XP14 represents Lennox' ongoing commitment to deliver the highest possible level of dependability. Extensive lab testing ensures maximum performance and strict adherence to standards of excellence.

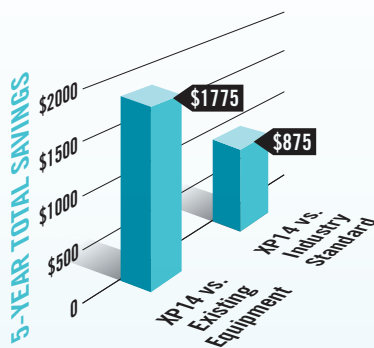
Peace of mind

The XP14 is protected by a 10-year limited warranty on the compressor and a 10-year limited warranty* on all remaining covered components.



Money-saving energy efficiency

With **efficiency ratings up to 16.50 SEER and 9.50 HSPF****, the XP14 can **save you hundreds of dollars each year** on utility bills, compared to older or conventional units.



SEER stands for "Seasonal Energy Efficiency Ratio" and is a measure of the cooling efficiency of heat pumps. The higher the SEER, the greater your energy savings. Typical SEER ratings start at 13.00, but the XP14 carries ratings as high as 16.50. HSPF stands for "Heating Seasonal Performance Factor" and is a measure of the heating efficiency of heat pumps.

Savings chart compares the 5-year savings you can expect from a 16.00 SEER and 9.20 HSPF heat pump vs. existing equipment with a 10.00 SEER/6.80 HSPF and industry-standard equipment with a 13.00 SEER/7.70 HSPF rating. The regions used to calculate household fuel and utility costs reflect a cross-section of cities in the U.S. In addition to geography, cooling costs indicated are based on 3-ton capacity specifications for DOE heating region 4, with 800 cooling hours, 2,250 heating hours per year and 11.62 cents per kWh (Source: EIA National average electric rate - Rolling 12 months ending in July, 2009). Your actual costs may vary depending on the weather, local fuel rates, system settings and your personal lifestyle.

*Online equipment registration at www.lennoxregistration.com is required within 60 days of installation (except in California and Quebec) or Lennox' base warranty will apply. Applies to residential applications only. See actual warranty certificate for details.



comfort

Enhanced comfort on extra-cold days



The XP14 can reach yet another level of comfort and energy-efficient performance when combined with a Lennox® gas furnace in one dual-fuel system. Your heat pump will provide cooling and warming on mild days, but on extremely cold days, the gas furnace takes over to maintain maximum comfort. Your dealer, using your location and other factors, will determine the temperature at which your system will switch from electric to gas. This helps ensure that your home is always comfortable—regardless of the weather outside.

A friendlier refrigerant



The XP14's scroll compressor uses the **chlorine-free R-410A refrigerant**, which meets the U.S. EPA's most stringent environmental guidelines. Lennox was one of the first HVAC manufacturers to develop R-410A as an alternative to R-22 (freon).

Allergy relief on warm days



The XP14 is designed to work with the Humiditrol® whole-home dehumidification system.*** Patented Humiditrol technology helps reduce humid conditions in the home, lessening the potential for mold and mildew growth.



The XP14 has earned the ENERGY STAR® label, which means it meets or exceeds guidelines set forth by the U.S. Environmental Protection Agency.



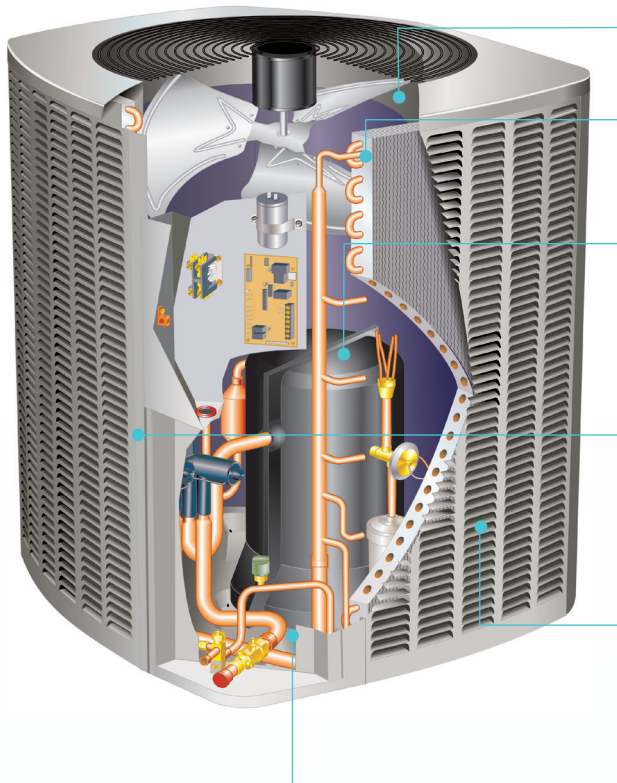
Choosing an ENERGY STAR® qualified product like the XP14 can improve your comfort, while also helping you save energy and money. For other ways to make your home more efficient, visit ItPaystoLiveSmart.com.

*Applies to residential applications only. See actual warranty certificate for details.

**Actual system efficiency may vary depending on the exact system match. Efficiencies are representative of a single AHRI matched combination.

***Must be accompanied by either a variable speed air handler or furnace and the ComfortSense® 7000 Series touchscreen thermostat.

Elite® Series XP14



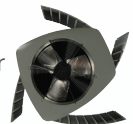
Precision-Balanced Direct-Drive Fan – Delivers quiet operation.

High-Efficiency Outdoor Coil – Provides exceptional heat transfer and low air resistance for high-efficiency operation.

Precision-Engineered Scroll Compressor with Special Compressor Sound-Dampening System – Provides quiet, efficient and reliable operation even in the most demanding applications.

PermaGuard™ Cabinet – Heavy-gauge, galvanized steel construction, louver coil guard, baked-on powder finish and durable zinc-coated steel base provide long-lasting protection against rust and corrosion.

SmartHinge™ Louver Design – Allows quick, easy access to interior components from all sides, so the unit can be serviced in minimal time.



Drainage Holes – Prevent damaging moisture from collecting inside the basepan.

Elite® Series XP14 Specifications

Model	018	024	030	036	042	048	060
SEER	Up to 15.00	Up to 16.50	Up to 16.20	Up to 16.20	Up to 16.00	Up to 15.20	Up to 15.20
HSPF	Up to 8.20	Up to 9.00	Up to 9.00	Up to 9.20	Up to 9.50	Up to 9.20	Up to 9.00
Sound Rating-dB	71	71	71	71	71	73	73
Dim. HxWxD (in)	31 x 30-1/2 x 35	39 x 30-1/2 x 35	39 x 30-1/2 x 35	35 x 30-1/2 x 35	39 x 35-1/2 x 39-1/2	39 x 35-1/2 x 39-1/2	45 x 35-1/2 x 39-1/2
HxWxD (mm)	787 x 775 x 889	991 x 775 x 889	991 x 775 x 889	889 x 775 x 889	991 x 902 x 1003	991 x 902 x 1003	1143 x 902 x 1003

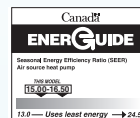
Note: Due to Lennox' ongoing commitment to quality, all specifications, ratings and dimensions are subject to change without notice.



Lennox is proud of the fact that these products have earned the Good Housekeeping Seal.



Proper sizing and installation of equipment is critical to achieve optimal performance. Split system air conditioners and heat pumps must be matched with appropriate coil components to meet ENERGY STAR® criteria. Ask your Lennox Dealer for details, or visit www.energystar.gov.



LENNOX

Innovation never felt so good.®

For a complete list of the registered and common law trademarks owned by Lennox Industries Inc., please visit www.lennox.com.